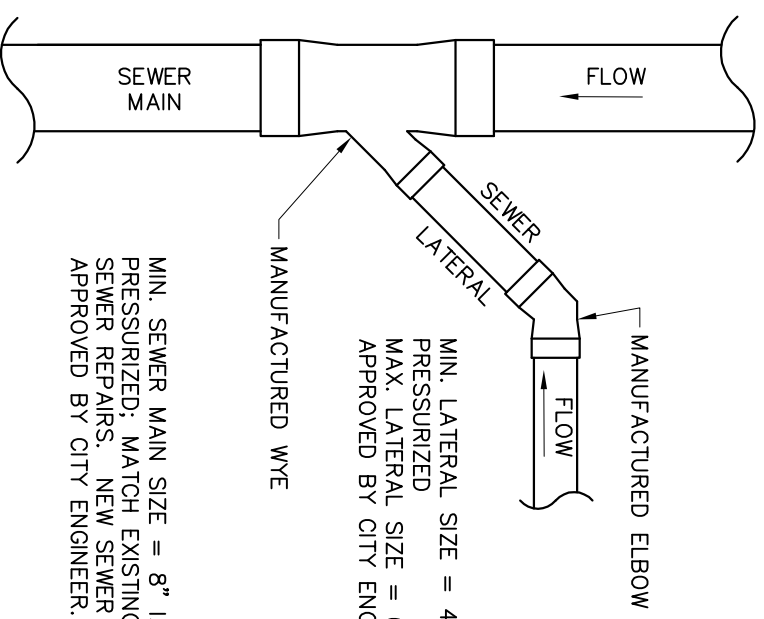


PLAN VIEW

NOT TO SCALE

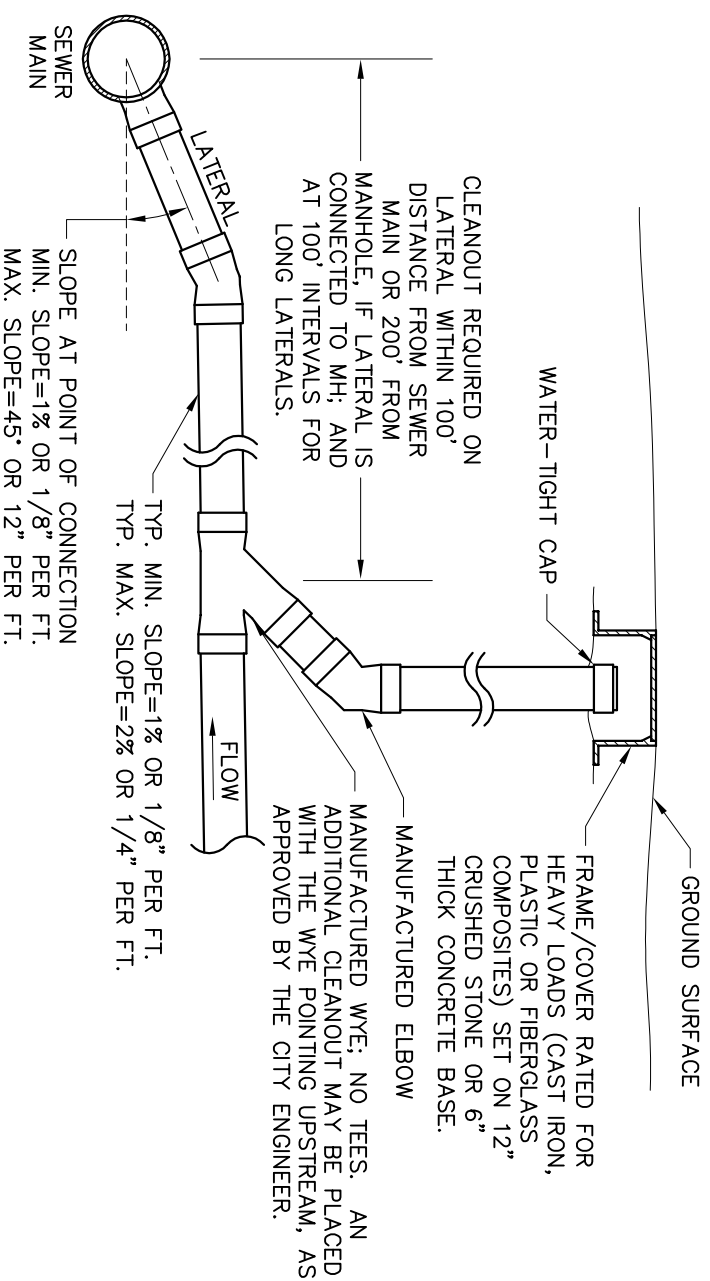


MIN. LATERAL SIZE = 4" I.D. GRAVITY; 2" I.D. PRESSURIZED
 MAX. LATERAL SIZE = 6" I.D., UNLESS OTHERWISE APPROVED BY CITY ENGR.

MIN. SEWER MAIN SIZE = 8" I.D. GRAVITY; 2" I.D. PRESSURIZED; MATCH EXISTING PIPE SIZE FOR SEWER REPAIRS. NEW SEWER DIMENSIONS TO BE APPROVED BY CITY ENGINEER.

SECTION VIEW

NOT TO SCALE



CLEANOUT REQUIRED ON LATERAL WITHIN 100' DISTANCE FROM SEWER MAIN OR 200' FROM MANHOLE, IF LATERAL IS CONNECTED TO MH; AND AT 100' INTERVALS FOR LONG LATERALS.

FRAME/COVER RATED FOR HEAVY LOADS (CAST IRON, PLASTIC OR FIBERGLASS COMPOSITES) SET ON 12" CRUSHED STONE OR 6" THICK CONCRETE BASE.

MANUFACTURED WYE: NO TEES. AN ADDITIONAL CLEANOUT MAY BE PLACED WITH THE WYE POINTING UPSTREAM, AS APPROVED BY THE CITY ENGINEER.

NOTES:

- SEWER MUST BE LAID IN A MANNER TO MINIMIZE USE OF BENDS. USE TWO 45° BENDS IN LIEU OF 90° BENDS.
- SEWERS MUST BE BURIED WITH A MINIMUM 36" COVER.
- IN-LINE PIPE CONNECTIONS BETWEEN EXISTING AND NEW PIPES, 18" INSIDE DIAMETER (I.D.) AND LESS, MAY BE MADE WITH FLEXIBLE COUPLINGS (DEFINED BELOW).
- NEW WYE CONNECTIONS ON EXISTING SEWER MUST BE MANUFACTURED WYES ON SEWER MAINS 12" I.D. AND LESS. SEWER LATERAL CONNECTION METHOD/TYPE ON MAINS OVER 12" I.D. MUST BE SUBMITTED TO CITY ENGINEER FOR APPROVAL.
- REDUCERS ARE PERMITTED ON SEWER LATERALS IF THE LARGER DIAMETER PIPE IS DOWNSTREAM OF THE REDUCER. REDUCERS MUST BE MANUFACTURED PVC, VCP, OR DIP REDUCERS; FLEXIBLE REDUCERS ARE SUBJECT TO THE APPROVAL OF THE CITY ENGINEER.
- FOR SEWER LATERAL CONNECTIONS TO MANHOLES, THE MANHOLE MUST HAVE EITHER A CAST-IN-PLACE OPENING AND GASKET SUITABLE FOR THE PIPE TYPE AND SIZE (SEE CITY STD. DWG. NO. 10, PRECAST SANITARY MANHOLE) OR THE MANHOLE MUST BE MACHINE CORED AND CONNECTION SEALED WATER-TIGHT (SEE CITY STD. DWG. NO. 11, OUTSIDE DROP CONNECTION FOR SANITARY MANHOLE).
- ODOT REFERENCES ARE FROM THE CURRENT ODOT CONSTRUCTION AND MATERIAL SPECIFICATIONS. ANY DISCREPANCIES SHALL BE SUBJECT TO THE CITY ENGINEER'S DISCRETION.

SEWER MAIN AND LATERAL PIPE BENDS, COUPLINGS:

- LESS THAN 12' OF COVER: PVC SDR 35, ASTM D 3034 (ODOT 707.45); VITRIFIED CLAY PIPE ASTM ER-4-67; DUCTILE IRON PIPE, CLASS 52, CEMENT AND BITUMASTIC LINED AWWA C151-91.
- 12' TO 24' OF COVER: PVC SDR 26, ASTM D 3034 (ODOT 707.45); VITRIFIED CLAY PIPE ASTM ER-4-67; DUCTILE IRON PIPE, CLASS 52, CEMENT AND BITUMASTIC LINED AWWA C151-91.
- GREATER THAN 24' OF COVER: PVC SDR 11, ASTM D 3034 (ODOT 707.45); VITRIFIED CLAY PIPE ASTM ER-4-67; DUCTILE IRON PIPE, CLASS 52, CEMENT AND BITUMASTIC LINED AWWA C151-91.
- ALL JOINTS MUST BE AIR-TIGHT BELL & SPIGOT OR TONGUE & GROOVE JOINT WITH RESILIENT GASKET.

SEWER MAIN AND LATERAL FLEXIBLE COUPLINGS:

- ELASTOMERIC PVC WITH STAINLESS STEEL SHIELD AND BANDS, FERROCO STRONG BACK RC OR 5000 SERIES RC, OR APPROVED EQUAL.

BEDDING AND BACKFILL

- BEDDING AND BACKFILL OF SEWERS MUST COMPLY WITH STANDARD DWG. NO. 19, UTILITY TRENCH REQUIREMENTS.

OFFICE OF THE CITY ENGINEER

CANTON, OHIO

DANIEL J. MOEGLIN, P.E., CITY ENGINEER

2436 30th St. NE 44705 339-489-3381

www.cantonohio.gov/engineering

APPROVED DATE: MAR 2014
 APPROVED BY: RMB
 DRAWING FILE NAME: ce_20.dwg

REVISIONS

DESCRIPTION	DATE	BY

STANDARD DRAWING NO. 20

SANITARY

SEWERS & LATERALS

SHEET 1 OF 1

