

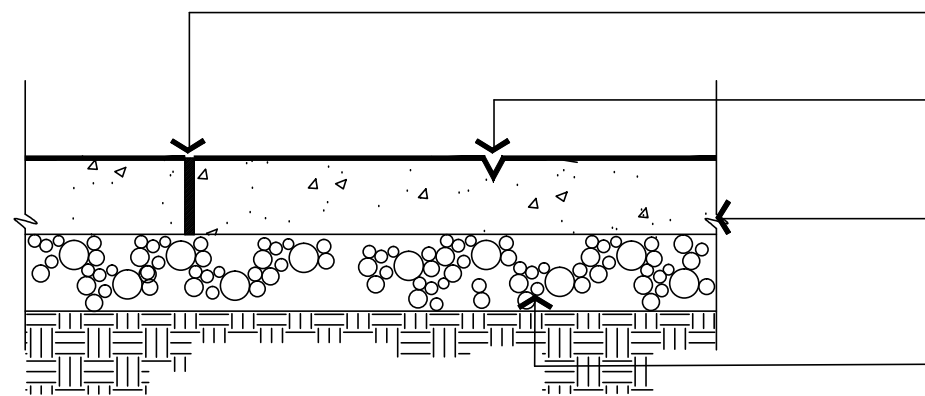
EXPANSION JOINT DETAIL  
NOT TO SCALE

NOTES:

- EXPANSION JOINTS TO BE 60' MAX. O.C. CONTROL JOINTS TO BE @ 4' O.C. OR AS SHOWN ON PLAN OR DIRECTED BY ENGINEER.
- PROVIDE LIGHT BROOM FINISH ON ALL CONCRETE SURFACES AFTER JOINT & EDGE TOOLING. PROVIDE 1/4" RADIUS ON ALL SLAB EDGES.

SAWCUT CONTROL JOINTS MAY BE PERMITTED IN STREETScape AREAS IF APPROVED BY THE PROJECT ARCHITECT/ENGINEER AND THE CITY ENGINEER PRIOR TO BID AND CONSTRUCTION.

CONCRETE WALK TO BE CLASS "C" ODOT 499 NO. 57 OR 67 LIMESTONE (SEE BELOW) NO EXPANSION JOINTS ARE TO BE PLACED AGAINST BRICK PAVER SECTIONS



1/2" CLOSED CELL EXPANSION JOINT FILLER IN WALK AND AGAINST BUILDINGS TO BE SEALTIGHT CERAMAR FOAM OR EQUAL, 1/2" PEEL STRIP CUT EXPANSION JOINT AT 60' MAX. O.C.

TYPICAL TOOLED AND CUT CONTROL JOINT, 1/5 DEPTH OF SLAB W/POLYURETHANE ELASTOMERIC SEALANT  
- TREMCO THC 900 / 901 OR EQUAL  
5" PLAIN PORTLAND CEMENT CONCRETE PAVEMENT, ODOT ITEM 608 AND 499, AS PER PLAN.

4" COMPACTED THICKNESS AGGREGATE BASE COURSE, ODOT ITEM #304.

NOTE: NO FOUNDRY SAND OR SLAG IS PERMITTED IN AGGREGATE BASE (304).  
AGGREGATE IN SURFACE CONCRETE SHALL BE AASHTO M NO. 57 OR 67 LIMESTONE ONLY.  
ALL CONCRETE FOR CURB AND WALKS SHALL BE ODOT 499, CLASS C.  
CLASS C OPTION 1 MAY BE USED BETWEEN MAY 1 AND OCTOBER 15.  
AGGREGATE IN SURFACE CONCRETE SHALL BE NO. 57 OR 67 LIMESTONE ONLY.

ODOT REFERENCES ARE FROM THE CURRENT ODOT CONSTRUCTION AND MATERIAL SPECIFICATIONS. ANY DISCREPANCIES SHALL BE SUBJECT TO THE CITY ENGINEER'S DISCRETION.

ALL CONCRETE CONSTRUCTION TO CONFORM TO CURRENT CITY OF CANTON SPECIFICATIONS FOR CONSTRUCTION, REPAIR AND REPLACEMENT OF SIDEWALKS, CURBS AND DRIVEWAYS.



OFFICE OF THE CITY ENGINEER  
CANTON, OHIO

DANIEL J. MOEGLIN, P.E., CITY ENGINEER  
2436 30th St. NE 44705 330-489-3381 www.cantonohio.gov/engineering

APPROVED DATE: FEB. 2012

APPROVED BY: JTD

DRAWING FILE NAME:  
ce\_40-47\_STREETScape.dwg

REVISIONS

DESCRIPTION	DATE	BY

STANDARD DRAWING NO. 42

STREETScape CONCRETE  
WALK PAVEMENT DETAILS

SHEET 1 OF 1